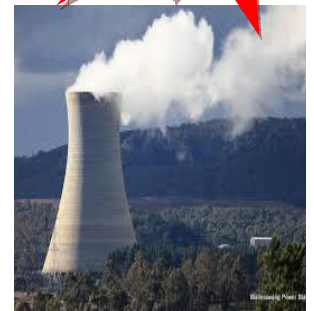
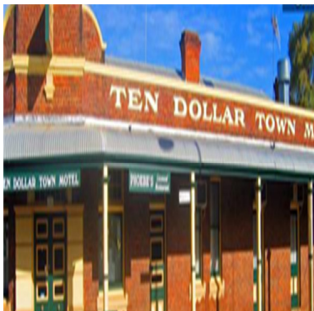
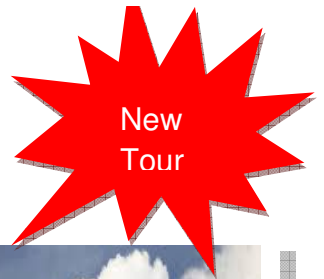




**WE DRIVE YOU
SINCE 1992**

Mudgee Gulgong Discovery

With Ezi Drive Coaches



3- Days with Brian and Mary

Tour Date Sunday 4 - Tuesday 6 December 2016

Tour Inclusions:

- Pick up from your home, transport to Mudgee and Gulgong and return to your door step (Sydney Metropolitan area only)
- Luxury Coach Travel, Seatbelts and Restroom
- Two Nights Quality Accommodation, Twin Share
- 2 Three Course Dinners with Choices & All Fully Cooked Breakfasts
- Lunch Day 1 & 2
- All Entry Fees And Guides As Per Itinerary
- Escorted Tour

Tour Highlights:

Driving tour through the Blue Mountains, Rylstone, Lue Pottery, Gulgong Pioneer Museum, Prince of Wales Opera House, Gulgong CWA Lunch. Mudgee Honey Haven, High Valley Wine & Cheese Company, Mount Piper Power Station & Energy Expo, Lithgow Workmen's Club

Tour Fee including GST:	Members	\$789.00 per person twin share
	Non Members	\$809.00 per person twin share
	Single Supplement	\$110.00

Minimum loading 20 passengers booked and paid by **Thursday 6 October 2016**

For information and bookings phone: 02 4774 9700
Website: ezidrivecoaches.com.au – Email: mary@ezidrivecoaches.com.au

Please note that the itinerary is subject to change without notice

PO Box 109 BRINGELLY 2556

The Itinerary

Day 1. Sunday 4 December 2015 Home – Gulgong

Lunch Dinner

We pick you up this morning and travel westward over the Blue Mountains through Mount Victoria and Lithgow to arrive at our lunch venue in **Rylstone**. Lunch today is at the historic **Old Globe Hotel**. There will be time to stroll through the village prior to travelling to **Lue Pottery**. Here we will have a demonstration of potters at work before arriving at our Motel the **Ten Dollar Town Motel**. Named because the town of Gulgong, was on our original. Ten Dollar Note. We will stay here for the next two nights.

Overnight Gulgong: Ten Dollar Town Motel 02 6374 1204

Day 2, Monday 5 December 2015

Breakfast & Lunch Dinner

Established in 1962, the **Gulgong Pioneers Museum** is home to one of the finest collections of Australiana in the country. The award winning museum's collection includes a comprehensive array of domestic tools and utensils, farm and mining equipment, horse drawn vehicles, early photographs, Aboriginal and geological artefacts, period clothing, and buildings dating from Gulgong's heyday during the turbulent Gold Rush days of the 1870's. Next we meet our guide Des Kelly for a guided town tour and enjoy the show "**Tales of the Swag**" in the **Prince of Wales Opera House**. The riches of the goldfields allowed an early impresario to engage some of the most famous performers of the era. Lunch today has been organised by the ladies of the **CWA**. Our afternoon tour takes us to Mudgee to visit the **Honey Haven** for honey and mead honey tasting, we will also be able to watch the bees hard at work through a special glass window which shows a cross section of a real working bee hive. There's a wide selection of gifts, and local produce for which the region is well known. Following is a visit to the **High Valley Wine & Cheese Company** for tasting. The company has been producing premium wines for the last 18 years and handmade gourmet cheeses for the last decade. After the tasting we make our way back to our motel to freshen up prior to dinner.

Overnight Gulgong: Ten Dollar Town Motel 02 6374 1204

Day 3. Day Date 2015: Gulgong to Home

Breakfast

After breakfast this morning we start our journey south to Bullen and along the Boulder Road to the **Mount Piper Power Station & Energy Expo**. We meet our guide at the Visitor Centre, who will organise a brief tour and explain the operation of power generators. Our next stop is the **Lithgow Workmen's Club** to purchase your own lunch before making our way towards home to arrive back home to say goodbye at your door after spending a fabulous few days with Ezi Drive Coaches.

For information and bookings phone: 02 4774 9700

Website: ezidrivecoaches.com.au – Email: mary@ezidrivecoaches.com.au

Please note that the itinerary is subject to change without notice

PO Box 109 BRINGELLY 2556